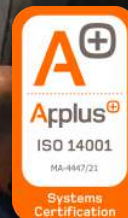
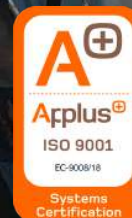




**TOTAL PLANNING**

Precision Machining

More than 65 years specialized  
in precision machining for all  
types of industries



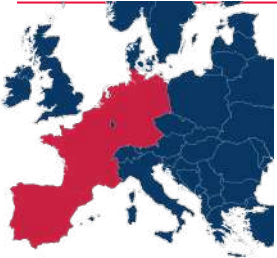


# TOTAL PLANNING

Precision Machining

Since  
**1955**

Our story begins in a small workshop in Barcelona, where the founders, with a conventional lathe, began a story that lasts more than 65 years. **Three generations dedicated to machining, evolving technologically with the times.**



Total Planning is **present in the European market** and it works hard to be **a reference in precision machining with CNC machines**, offering **customized solutions** for sectors such as machinery or packaging manufacturers, medical technologies, aeronautics, rail, petrochemical, among others.



We focus on critical components, specializing in **complex geometries and small and medium series production.**





**TOTAL PLANNING**  
Precision Machining



**25**

employees

**2.68M€**

Sales 2021

⚡ (22% growth  
from 2020)

**40%**

Medtech

**25%**

Export

(Germany, France, Portugal,  
Belgium, Netherlands)

# In which sectors are we specialized?



**MEDICAL  
DEVICES**

For us, the medical technology sector is key and the fastest growing market. We have extensive experience in manufacturing various components for the medical field: clinical diagnostic devices, solutions for physical disabilities, laser devices for medical and aesthetic use, packaging machines for medical equipment, maintenance of medical equipment...

**BCNMEDICARE**   
INDUSTRIAL HUB

[bcnmedicare.com](http://bcnmedicare.com)

TOTAL PLANNING, in order to continue expanding in the medical technology sector, is part of the BCN MEDICARE INDUSTRIAL HUB. In it, you will find **the 'know how' of the Catalan industry at the service of the Healthcare sector**. We intend to cover the life cycle of products and services related to the medical sector: from engineering to design, manufacturing, sheet metal, precision machining, precision machining, milling, electronic components, plastic injections, assembly and marketing.

[www.totalplanning.cat](http://www.totalplanning.cat)



**We have the medical  
certification  
ISO13485: 2016**

# MAIN SECTORS



## PACKAGING

We machine and assemble subsets of a wide range of essential components for machinery manufacturers in general; mainly for packaging, food, laboratories, pharmaceuticals, among others.



## ENGINEERING

We have experience in elements for various applications in the field of engineering; from access control equipment, railroad measuring devices, GPS equipment, etc.



## AERONAUTICS & AEROSPACE

We have a great experience in the machining of special alloys, complying with the requirements of the specific standard for this sector EN9100: 2019.



## RAILWAY

We manufacture critical components for the railway industry; especially for traction motors, as well as catenary elements, track meters, etc.



## PETROCHEMICAL

As the sector requires, we machine special high strength steels.



## SPACE AND TELECOM

We work for companies with high-precision components that suffer from extreme conditions.

# FEATURES



## MATERIALS

Aluminum, carbon steel, stainless steel, engineering plastics, special alloys, non-ferrous metals (brass, bronze, copper)...



## DIMENSIONS

Ø 5 to Ø 750 mm lathe and 1000 x 500 x 500 mm in machining centre (3, 4 & 5 axis)



## QUANTITY

Small and medium series **from 5 to 500** units, and prototypes included

## ADDITIONALS PROCESSES:

Machining under UHV specifications ( $10^{-9}$  -  $10^{-12}$  mbar), heat treatment (tempering, induction hardening, nitro carburising, foundations...), surface treatments (blueing, zinc, nickel...), painting, grinding, gummed, etc.

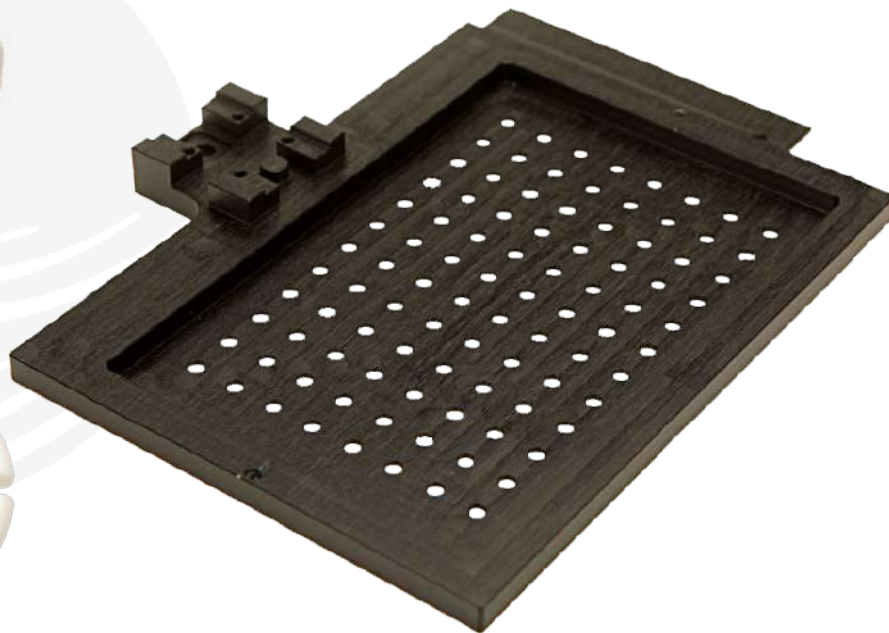
## QUALITY SYSTEM:





**TOTAL PLANNING**  
Precision Machining

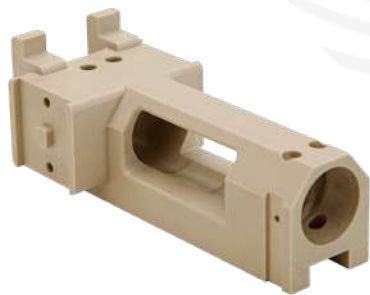
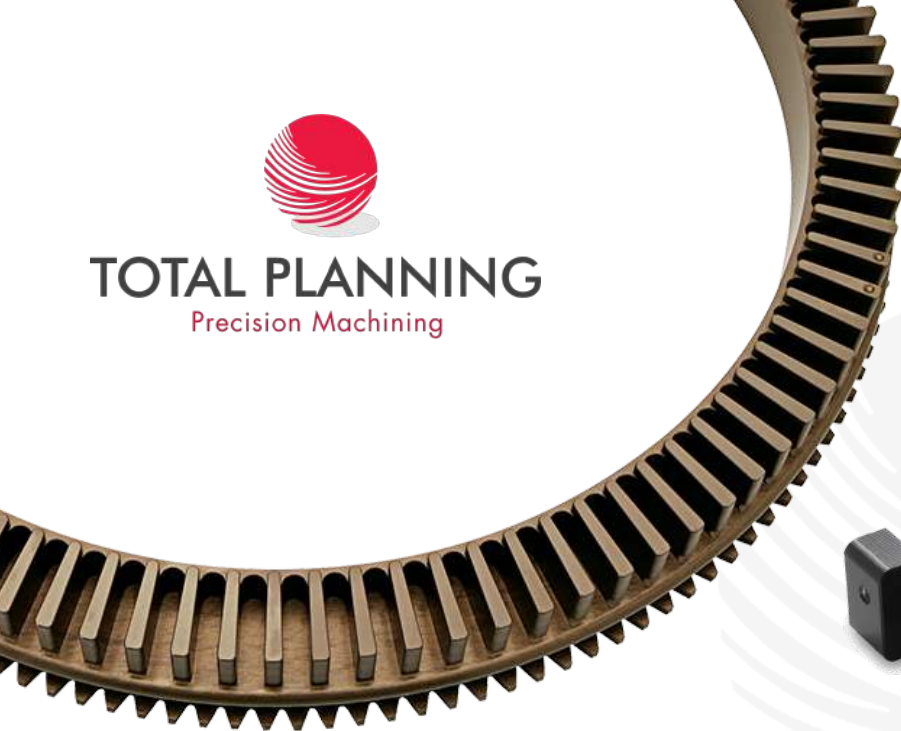
# Examples of machined parts





# TOTAL PLANNING

Precision Machining



[www.totalplanning.cat](http://www.totalplanning.cat)

# Technology

## CNC MACHINING CENTRES

### Dimensions

DECKEL MAHO DMU 100 MONOBLOCK (5 axis) with HEINDENHAIN 530	1080 x 710 x 710 mm
DECKEL MAHO DMU 100T (5 axis) with CNC HEINDENHAIN TNC 530	1080 x 710 x 710 mm
HAAS UMC -750 (5 axis) with CNC HAAS	765 x 510 x 510 mm
DECKEL MAHO DMU 50T (3+2 axis) with CNC HEINDENHAIN TNC 530	500 x 400 x 400 mm
BRIDGEPORT – HARGINGE (3 axis) CONQUEST v1000 with CNC HEIDENHAIN TNC 620	1020 x 610 x 610 mm
BRIDGEPORT – HARGINGE (4 axis) CONQUEST v1000 with CNC HEIDENHAIN TNC 620	1020 x 610 x 610 mm
OKUMA MX-55VA (3 axis) with CNC OKUMA OSP U10M	1050 x 560 x 450 mm
OKUMA MX-45VAE (4 axis) with CNC OKUMA OSP 700 M-G	1080 x 460 x 450 mm
UNIVERSAL MILLING MACHINEX LAGUN – Model FTV-4SP	700 x 350 x 350 mm

## AUXILIARY MACHINERY

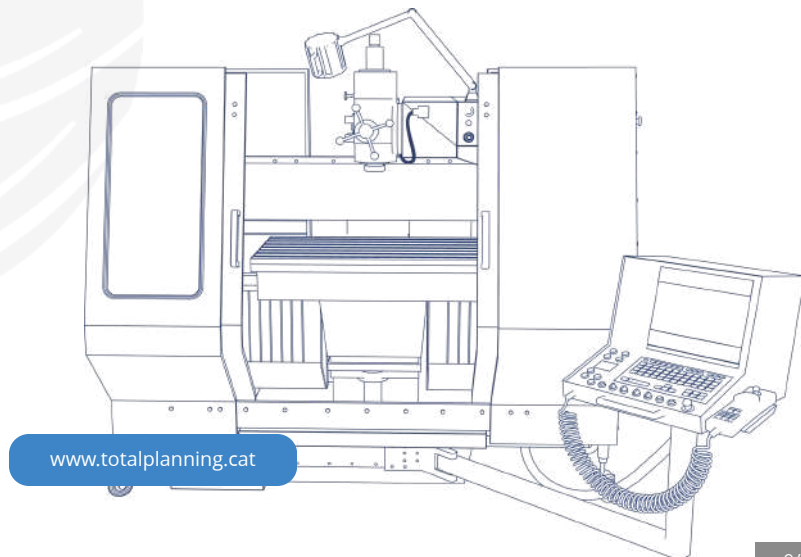
### Model

Three-dimensional multi-axis machine CNC	8SPARK 06.05.05 with control and head RENISHAW
3-axis manual 3-axis machine	ETALON, DERBY 454
Tool measuring and adjusting machine	ZOLLER SMILE 1.0
Shrink fit machine Power Clamp Basic	Haimer Power Clamp mini
Ultrasonic cleaning machine	SK 300

## CNC LATHES

### Dimensions

DOOSAN LYNX2100 LMS with FANUC iHMI	Ø 300 mm x 510 mm
HARRISON 180 XS with CNC FANUC	Ø 850mm x 2.000 mm long.
DECKEL NEF 520 SEMICONTROL with CNC HEINDENHAIN	Ø 285mm x 500 mm long.
OKUMA LB 15 II M (monitorizes tools) with CNC OSP 700L	Ø 360mm x 500 mm long.
OKUMA LB 15 with CNC OSP 5000L	Ø 250mm x 500 mm long.



[www.totalplanning.cat](http://www.totalplanning.cat)

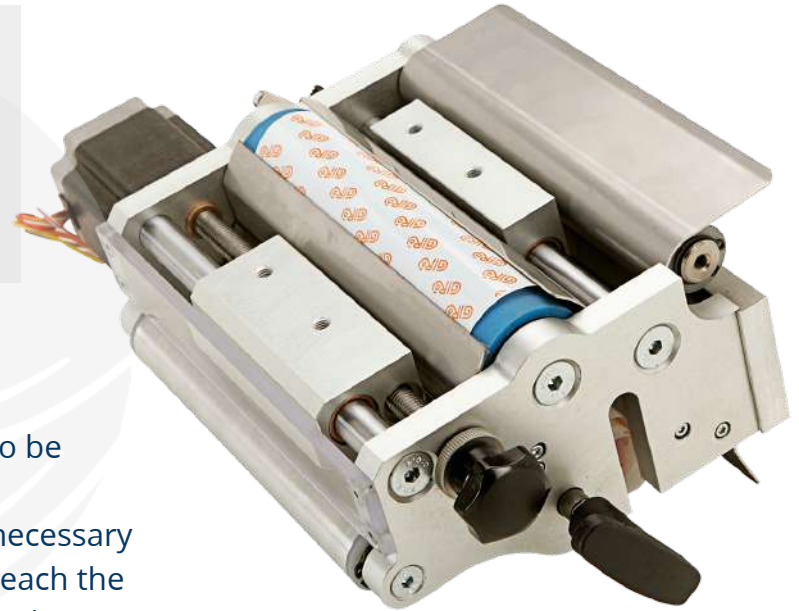


# ADDITIONAL PROCESSES

In order to provide a complete service to our customers, we make small assemblies of machined parts in our facilities together with commercial materials or manufactured by processes complementary to ours. In this way, we ensure the perfect fit and operation of the final product.

## MACHINING UHV

Within the framework of scientific research, our customers need their parts to be machined in accordance with the UHV standard ( $10^{-7}$  -  $10^{-11}$  mbar). These specifications form part of the application of UHV in their assembly and are necessary to reduce surface contamination by reducing the number of molecules that reach the part in a given time period. All machining work must be scrupulously controlled to ensure that no foreign matter is embedded in the surface of the material.



# ADDITIONAL PROCESSES

## CLEANING

We work with critical sectors such as the pharmaceutical and electronics industries, where strict standards of cleanliness and contamination control are essential. To meet these requirements, we have implemented a robust process for cleaning machined parts:

- We have an ultrasonic cleaning machine that allows us to effectively remove contaminants and dirt, improving the quality of the parts and meeting the cleanliness standards set by our customers, especially in critical sectors such as the semiconductor industry.
- If necessary, we can also implement double bagging to minimize the introduction of particles and contaminants during the handling and transportation of products or materials within a cleanroom environment. By using double bagging, we create an additional physical barrier that reduces the possibility of external particles and contaminants coming into contact with the product or material.



# TECHNICAL OFFICE

Total Planning has its own Technical Office department. From it, the needs of our customers are analyzed.

Our technicians study the most suitable system for the manufacture, programming and selection of tools and tools, necessary for the manufacture of the product.

The main objective is to obtain, from the beginning, the best production and quality process, adapting the needs of each client to our capabilities. In short, optimize each manufacturing.



*Our technicians have CAD-CAM  
MasterCam software*

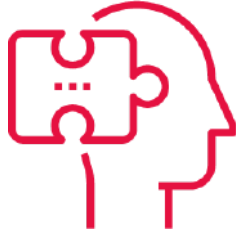


**TOTAL PLANNING**

Precision Machining

**Why choose  
TOTAL PLANNING?**

# Know how & expertise



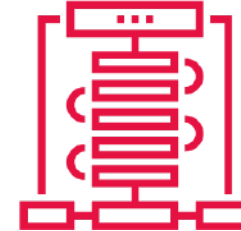
## KNOW HOW

We have a long history in the machining sector. This gives us experience, both in materials, cutting tools, thermal and surface treatments and in the production process, as well as knowledge in terms of quality requirements of sectors as strict as medical or aeronautical.



## QUALITY MANAGEMENT

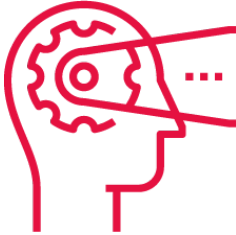
Our quality systems is guaranteed by the certification ISO9001:2015, with the medical certification ISO13485 and for the ISO14001. Checks throughout the whole process, not limited to the final check, make the number of rejections or incidents be minimal.



## TRACEABILITY

We guarantee the traceability of our products, from the purchase of the material, throughout the production process, in its external phases (treatments, etc.), until the final product is delivered to the customer. The processes are documented according to the requirements of each client.

# We are partners



## RESPONSABILITY

Our employees' commitment to quality is full. The Total Planning team is aware that we work with sectors, such as aeronautics or medical, that require a high level of demand.



## COLLABORATION

We work with our clients to ensure that their projects can be successfully implemented by making recommendations or suggestions necessary for the viability of the project, from design to mechanization.



## GUARANTEE

We guarantee to our customers the delivery date established. Thanks to our ERP and the monitoring of the machines, we know, in real time, what stage each manufacture is in.

# THANK YOU



**TOTAL PLANNING**  
Precision Machining

Pol. Ind. La Ferrería. Av. La Ferrería 49-51  
08110 Montcada i Reixac (Barcelona) · Spain

**Juan José Sánchez**

Phone: +34 93 278 09 90

Mobile: +34 678 976 779

[jsanchez@totalplanning.cat](mailto:jsanchez@totalplanning.cat)

[www.totalplanning.cat](http://www.totalplanning.cat)